

2019-2020

# **HANDBOOK**

## **EVANGEL CHRISTIAN SCHOOL**

HOMESCHOOLING TO KNOW THE PREMINENCE OF CHRIST™

---

P.O. Box 1670

ALABASTER, AL 35007

[OFFICE@EVANGELHOMESCHOOL.ORG](mailto:OFFICE@EVANGELHOMESCHOOL.ORG)

205.706.2595 (PH) • 205.621.4831 (FX)

[EVANGELHOMESCHOOL.ORG](http://EVANGELHOMESCHOOL.ORG)

# EVANGEL CHRISTIAN SCHOOL HANDBOOK

## TABLE OF CONTENTS

	Page #
✘ <a href="#">Vision</a>	1
✘ <a href="#">Mission</a>	1
✘ <a href="#">Distinctives</a>	1
✘ <a href="#">Statement of Faith</a>	2
✘ <a href="#">Authority Structure</a>	2
✘ <a href="#">Roles of Church Session, Board, Administrator, Parents</a>	3
✘ <a href="#">Standards of Conduct</a>	4
✘ <a href="#">Discipline</a>	5
✘ <a href="#">Philosophy of Education</a>	7
✘ <a href="#">Enrollment Procedures</a>	8
✘ <a href="#">Annual Record-Keeping &amp; Testing Requirements</a>	8
✘ <a href="#">ECS High School Code</a>	8
✘ <a href="#">Academic Recommendations</a>	9
✘ <a href="#">HSLDA Group #</a>	9
✘ <a href="#">High School Graduation Requirements</a>	9
✘ <a href="#">Timetable for College-Bound Students</a>	11
✘ <a href="#">Family Covenant</a>	12

---

P.O. BOX 1670  
ALABASTER, AL 35007  
[OFFICE@EVANGELHOMESCHOOL.ORG](mailto:OFFICE@EVANGELHOMESCHOOL.ORG)  
205.706.2595 (PH) • 205.621.4831 (FX)  
[EVANGELHOMESCHOOL.ORG](http://EVANGELHOMESCHOOL.ORG)

# EVANGEL CHRISTIAN SCHOOL

## HANDBOOK 2019-2020

### VISION

To aid parents in the education of their children in order to know the preeminence of Christ

### MISSION

To glorify God by encouraging and equipping each family as they discover Christ's preeminence in all things and pursue excellence in all areas of academic education, competitive athletics, enrichment activities, and post high school opportunities

### DISTINCTIVES

To offer oversight for families pursuing parent-directed home education, under the legal authority of a recognized church, with an emphasis on financial disclosure and accountability by:

- encouraging Christian community
- making available school averages on ACT/SAT scores
- providing
  - facilities
  - leadership and enhancement opportunities through extracurricular activities, including but not limited to:
    - Builders Club
    - graduation ceremony
    - homecoming activities and dance
    - high school class officers
    - Key Club
    - National Honor Society
    - prom
    - Robotics Club
    - senior banquet
    - yearbook
  - junior high and varsity athletics at the highest level allowed, including but not limited to:
    - baseball
    - basketball
    - cheerleading
    - color guard
    - football
    - golf
    - soccer
    - softball
    - tennis
    - volleyball
  - year and round administration and guidance counseling
  - high school tutorial program (Evangel Tutorials)
  - electronic newsletter (The Lightning Ledger) containing opportunities for involvement and other items of interest
  - extensive use of social media to enable communication and community

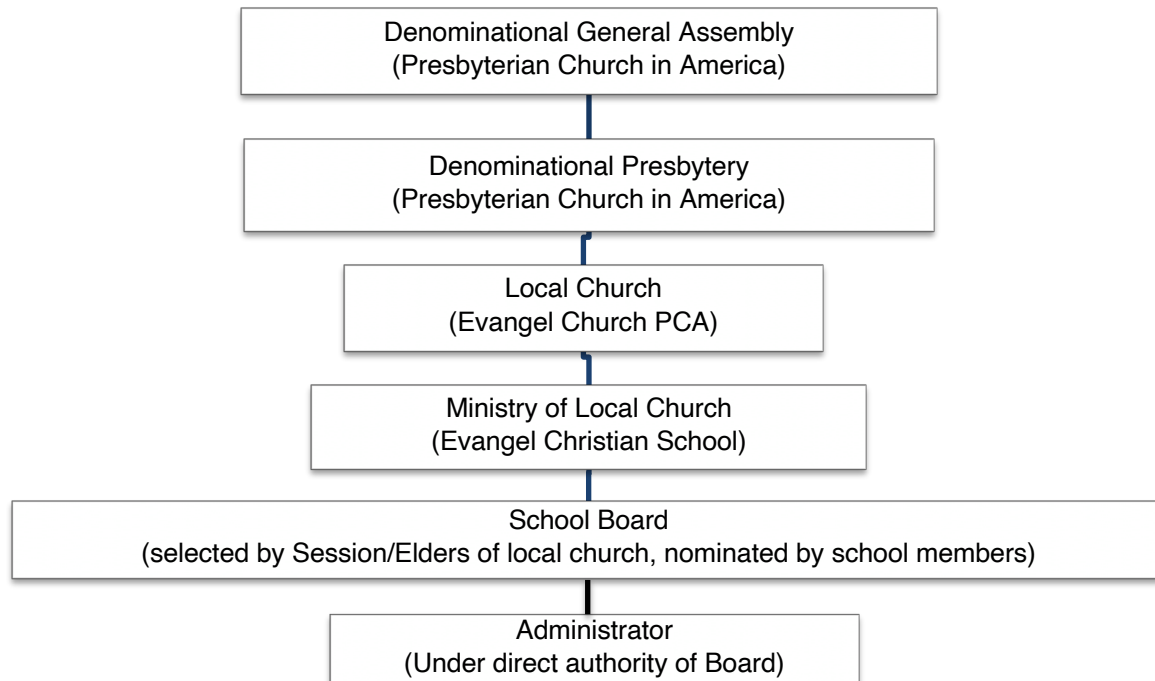
# EVANGEL CHRISTIAN SCHOOL

## HANDBOOK 2019-2020

### STATEMENT OF FAITH

- There is one God, eternally existent in three persons: Father, Son and Holy Spirit (Luke 3:22, 1 John 5:7)
- God is Spirit, and those who worship Him must worship Him in Spirit and Truth (John 4:24)
- Jesus Christ, born of a virgin, is God in the flesh (Mt. 1:23, Col. 2:9)
- The Holy Bible as written is the inspired and infallible Word of God
- Man is by nature sinful and inherently in need of salvation, totally incapable of saving himself (Ps. 51:5, Gen. 8:21, Ro. 5:12)
- Salvation comes through Jesus Christ and His shed blood (Is. 53)
- The death of Christ provides atonement for our sins (Ro. 5:19, Heb. 10:14)
- Jesus Christ literally rose bodily from the dead (Mt. 27:53, Ac. 1:22, 4:33, Ro. 1:4, 1 Peter 1:3)
- Jesus will return to earth in the Second Advent (Ac. 17:31)

### AUTHORITY STRUCTURE



# EVANGEL CHRISTIAN SCHOOL

## HANDBOOK 2019-2020

### ROLES OF THE SESSION, THE BOARD, THE ADMINISTRATORS, AND THE PARENTS

- ✧ The Session may:
  - By a 2/3 vote, override any decision of the Evangel Christian School Board
- ✧ The Board will:
  - Determine all policies and procedures of ECS, based on guidelines established by the Session of Evangel Church, P.C.A.
  - Govern, either directly or through delegation where appropriate, all hiring and termination decisions regarding any employees such as Administrators &/or staff
  - Determine all salaries and benefits of any employees of Evangel Christian School
  - Govern, either directly or through delegation where appropriate, all decisions regarding the selection of any volunteers in leadership positions such that would require those volunteers to administrate discipline over children enrolled with ECS
  - Moreover, agree to be dissolved and the powers and duties of the Board returned to the Session of Evangel Church upon a two-thirds vote of the Session
- ✧ The Administrator will:
  - Be an ex-officio member of the Board
  - Administrate all daily activities of ECS as directed by the Board
  - Select any volunteers in leadership positions such that would require those volunteers to administrate discipline over children enrolled with ECS after seeking Board approval of each such volunteer, and
  - Moreover, handle any disputes among Parent/Teachers that cannot be resolved among them.
- ✧ The Parent/Teachers will:
  - Adhere to the ECS Statement of Faith
  - Provide, either through direct instruction or delegation, the daily academic education of their children, as guided by God, through the Holy Scriptures, some applicable portions of which are as follows:
    - *“But if anyone does not provide for his relatives, and especially for members of his household, he has denied the faith and is worse than an unbeliever.”* (1 Tim. 5:8)
    - *“Fathers do not provoke your children to anger, but bring them up in the discipline and instruction of the Lord.”* (Eph. 6:4)
    - *“You shall teach them diligently to your children, and shall talk of them when you walk by the way, and when you lie down, and when you rise.”* (Deut. 6:7)
  - Follow all rules set by the School Board under the governance of Evangel Church, P.C.A.
  - Be free to use any curriculum or teaching format they deem best for their children
  - Handle any disputes according to Matthew 18:15-17, only then bringing any irresolution to the Administrators

# EVANGEL CHRISTIAN SCHOOL

## HANDBOOK 2019-2020

### STANDARDS OF CONDUCT

The Standards of Conduct are designed to communicate community expectations of appropriate conduct and to provide guidelines for restoring brothers or sisters who are in violation of this conduct. Living and receiving instruction with other saved sinners, reminds us of our own imperfections, selfishness, and sins and how we must balance personal needs with the needs of others; or for that matter, the needs of the institution.

*"I appeal to you therefore, brothers, by the mercies of God, to present your bodies as a living sacrifice, holy and acceptable to God, which is your spiritual worship. Do not be conformed to this world, but be transformed by the renewal of your mind, that by testing you may discern what is the will of God, what is good and acceptable and perfect." Romans 12:1,2 (ESV)*

Christian freedom is a work of grace not to be denied, but we must also remember what Paul said about "not turning our freedom (liberty) into an opportunity for the flesh." The unity of Christian freedom is Christian responsibility, and each of us must choose to build a habit of life that "captures every thought to the obedience of Christ," "shares the affections of Christ for one another," and "considers the interests of others as more important than our own." It is our goal to be a community that lives a lifestyle of grace inseparable from obedience. Community takes patience, giving, growing, sharing, and loving, so be patient with one another. Families, therefore, must conduct themselves in a way that reflects a commitment to holy living: doing what the Bible requires, abstaining from what the Bible forbids, and carefully discerning the will of God in every area of life.

Students at Evangel Christian School are to practice all the virtues taught in the Scriptures, such as discipline, modesty, patience, and honesty and are expected to worship in a local church regularly.

- ✎ Students are also required to abstain from all activities which violate Biblical teachings, such as theft, drunkenness, slanderous or profane language, all forms of dishonesty including cheating, and sexual sins (such as premarital sex, adultery, homosexual behavior and the use or possession of obscene or pornographic material). Students must reject all sinful attitudes, such as greed, jealousy, pride, lust, and prejudice against those of a different race, gender, or socio-economic status.
- ✎ Additionally, students are to use wisdom and Christ-like discretion in the application of Biblical principles to decisions regarding all areas of life, such as the involvement with various forms of media, social interaction and the physical expression of intimacy in relationships. When students are not at an Evangel Christian School function, they should select places of business, organizations, or events that would promote and support the Standards of Conduct. Students are expected to use discretion by avoiding events that are not primarily for Christ-like edification and social interaction. Students should avoid, and encourage one another to avoid events or organizations that primarily exist to serve alcohol, encourage lewd behavior, or promote inappropriate physical intimacy and/or sexual behavior.
- ✎ The Scriptures call us to obey the authorities that have been placed over us in the civil government. All students are required to uphold local, state, and federal law except on the rare occasions when compliance with the civil authority may be in conflict with the Scriptures. Students violating civil laws, such as arson, criminal homicide (manslaughter by negligence), sex offenses (forcible and non-forcible), robbery, aggravated assault, burglary, motor vehicle theft, weapon law violations, drug abuse violations, liquor law violations may be referred to the civil authorities for prosecution, and may also be subject to disciplinary action by the school.
- ✎ Realizing that we are daily representatives of the Body of Christ, we establish that students and parents will:
  - Maintain high standards of courtesy, morality and honesty and
  - Dress appropriately and modestly, not only while attending specific Evangel Christian School functions, but also in all public appearances.

# EVANGEL CHRISTIAN SCHOOL

## HANDBOOK 2019-2020

### DISCIPLINE

Students found not living according to the Biblical teachings will be subject to disciplinary action from the school. The school recognizes that some breeches of the Biblical teachings are best handled through punitive discipline, some by extended counseling or involvement with an outside agency or church and others by informal admonishment. The school reserves the right to handle each situation in the manner that it deems to be most effective for the correction and development of the individual(s) involved, as well as in the best interest of the school community.

*"...My son, do not regard lightly the discipline of the Lord, nor be weary when reproved by him. For the Lord disciplines the one he loves, and chastises every son whom he receives. It is for discipline that you have to endure. God is training you as sons. For what son is there whom his father does not discipline?"*  
(Heb. 12:5-8)

At the least, the following five reasons underline the purpose of discipline:

1. To avoid God's judgment on the individual and/or the Evangel Christian School Community.
2. To remove members of the community who are unwilling to abide by the Standards of Conduct,
3. To deter others from committing the same violation,
4. To assist in reconciliation and change of the behavior, and
5. To stop the behavior deemed unacceptable by the Students, Administration, and Board of Evangel Christian School.

All members of Evangel Christian School will personally follow and submit to the Biblical principles for settling conflict or offering correction as described in Matthew 18:15 – 17.

*If a fellow believer hurts you, go and tell him – work it out between the two of you. If he listens, you've made a friend. If he won't listen, take one or two others along so that the presence of witnesses will keep things honest, and try again. If he still won't listen, tell the church (or, if appropriate, the administrators of Evangel Christian School).*

The one-on-one process of discipline allows for the most complete and sensitive understanding of the situation so that the student is not harmed by an unnecessarily rigid or impersonal system. Most discipline should be handled on a peer-to-peer basis. If peer confrontation does not stop and change the behavior, then Matthew 18 provides guidelines for the additional sequential inclusion of higher levels of authority until the inappropriate behavior is discontinued.

If the process should escalate beyond the peer-to-peer step, the school will consider the following criteria when determining the best course of discipline.

- ✎ What was the "nature" of the act and the "degree of responsibility" of the student?
- ✎ Was the act intentional or unintentional?
- ✎ Was the act a first time offense or a repeat offense?
- ✎ Is the student currently involved in other disciplinary actions?
- ✎ Did the act itself bear disciplinary consequence?
- ✎ Is the student self-reporting a violation of the Standard?
- ✎ To what extent did the act influence the Evangel or surrounding community?
- ✎ What degree of repentance and reconciliation has been evidenced?
- ✎ Is the student holding a position of leadership?

# EVANGEL CHRISTIAN SCHOOL

## HANDBOOK 2019-2020

### DISCIPLINE, CONTINUED

If a student self-reports a violation of the Standards as a means to confess, repent, and reconcile an offense, the Administration will work with the student in a manner reflecting the willingness to grow and restore the offended party. Given this heart and spirit of humility, reconciliation and obedience, the offense may not need to be taken to The Board of Evangel School as long as the student and the Administrators can reconcile the offense in the same spirit.

All disciplinary actions are personal concerns of the individual student(s) involved, not for public knowledge. It is to be understood that a "check and balance" system of supervision by the Session of Evangel Church and the Board of Evangel School oversees all disciplinary decisions of the Administrators. This procedure stresses consistency while addressing the needs of the individual student involved.

Families are encouraged to appeal disciplinary decisions with which they disagree through an administrative order of authority and accountability. The decision of any authority can be appealed to the next higher authority. This appeals process is as follows:

1. An Administrator's decision can be appealed to The Board of Evangel School.
2. A Board decision can be appealed to the Session of Evangel Church, which can either:
  - a. Refuse to hear this appeal, at which time the decision of the Board will be final, or
  - b. Lessen, maintain, or strengthen the Board's decision.

*The Session is accountable to Evangel Presbytery, PCA, which is accountable to and receives its authority from the General Assembly of the Presbyterian Church in America.*

When confrontation is required to reconcile a grievance, all members of Evangel Christian School and its authorities agree to respond to conflict mindful of the following principles\*:

**GLORIFY GOD** - Instead of focusing on our own desires or dwelling on what others may do, we will seek to please and honor God-by depending on His wisdom, power, and love; by faithfully obeying His commands, and by seeking to maintain a loving merciful and forgiving attitude.

**GET THE LOG OUT OF YOUR OWN EYE** - Instead of attacking others or dwelling on their wrongs, we will take responsibility for our own contributions to conflicts-confessing our sins, asking God to help us change any attitudes and habits that lead to the conflict, and seeking to repair any harm we may have caused.

**GO AND SHOW YOUR BROTHER OR SISTER HIS OR HER FAULT** - Instead of pretending that conflict doesn't exist or talking about others behind their backs, we will choose to overlook minor offenses, or we will talk directly and graciously with those who offenses seem to serious to overlook. When a conflict with another Christian cannot be resolved in private, we will ask others in the body of Christ to help us settle the matter in a Biblical manner.

**GO AND BE RECONCILED** - Instead of accepting premature compromise or allowing relationships to wither, we will actively pursue genuine peace and reconciliation-forgiving others as God, for Christ's sake, has forgiven us, and seeking just and mutual beneficial solutions to our differences.

*"Therefore, if anyone is in Christ, he is a new creation; the old has gone, the new has come! All this is from God, who reconciled us to himself through Christ and gave us the ministry of reconciliation: that God was reconciling the world to himself in Christ, not counting men's sins against them. And he has committed to us the message of reconciliation. We are therefore Christ's ambassadors, as though God were making his appeal through us. We implore you on Christ's behalf: Be reconciled to God. God made him who had no sin to be sin for us, so that in him we might become the righteousness of God." 2 Corinthians 5:17-21*

---

\* Peacemakers: A Commitment to Biblical Conflict Resolution



# EVANGEL CHRISTIAN SCHOOL

## HANDBOOK 2019-2020

### PHILOSOPHY OF EDUCATION

EVANGEL CHRISTIAN SCHOOL affirms that God has given parents, ideally through the leadership of the father, the mandate to “*nurture (their children) in the chastening and admonition of the Lord.*” (Eph. 6:1-9). *Nurture* as defined by Merriam-Webster means training or upbringing. The word *nurture* comes from the Greek word, *paideiva*, which means “the whole training and education of children (which relates to the cultivation of mind and morals, and employs for this purpose now commands and admonitions, now reproof and punishment). It also includes the training and care of the body.” The word is also translated *instruction* (2 Tim. 3:16), which Merriam-Webster defines as “the action, practice, or profession of teaching.” We conclude that this mandate to educate our children is a primary application of the first and great commandment.

*“Now this is the commandment, the statutes and the rules that the LORD your God commanded me to teach you, that you may do them in the land to which you are going over, to possess it, that you may fear the LORD your God, you and your son and your son's son, by keeping all his statutes and his commandments, which I command you, all the days of your life, and that your days may be long. Hear therefore, O Israel, and be careful to do them, that it may go well with you, and that you may multiply greatly, as the LORD, the God of your fathers, has promised you, in a land flowing with milk and honey. Hear, O Israel: The LORD our God, the LORD is one. You shall love the LORD your God with all your heart, with all your soul, and with all your might. And these words that I command you today shall be on your heart. You shall teach them diligently to your children, and shall talk of them when you sit in your house, and when you walk by the way, and when you lie down, and when you rise. You shall bind them as a sign on your hand, and they shall be as frontlets between your eyes. You shall write them on the doorposts of your house and on your gates. (Deut. 6:1-9; Matt. 22: 37-38)*

This teaching is to be undertaken constantly and consistently, in every time and place, covering all the spheres of human thought, activity, and living. Moreover, as we have established, God has assigned this responsibility directly to parents, rather than any other institution of society. The Christian school is therefore but an extension of the parents in the fulfillment of their great task.

EVANGEL CHRISTIAN SCHOOL also affirms that God created Man in His own image and for His own glory alone. God has given Man the mandate to subdue the world in which God placed him (Gen. 1: 26-28). However, Man now lives under the curse justly incurred because of Adam's sin (Gen. 3: 17-19). This curse is experienced not only spiritually (Eph. 2: 1-4) but also intellectually (Rom. 8: 6; Rom. 1:22; 1 Cor. 2: 14; Eph. 4: 17-18). Since this curse has affected the whole man, the task of pursuing proper knowledge of God and His world is now a task subject to tremendous difficulties and distortions. These difficulties and distortions can only be overcome through spiritual regeneration, accomplished solely and completely through Christ's atoning death on the cross. The redemption that Christ has secured for us saves us, not only spiritually, from the wrath to come, but also delivers us from intellectual futility and foolish reasoning in our methods of learning about the world in which we presently live. Unless complete subjection to Christ comes as the precursor to all teaching, the parents' efforts are in vain. In order to accomplish the pursuit of God-centered knowledge, parents must remain subject to Christ's guidance and direction in their lives.

EVANGEL CHRISTIAN SCHOOL further affirms that it is the Word of God as revealed in Scripture that instructs His people in the truth (John 17: 17). Thus, moral neutrality in education is impossible (Matt. 12: 30, Jas. 4: 4). Accordingly, the aim of Christian parents must be to encourage their children to “bring every thought captive to the obedience of Christ.” (2 Cor. 10: 5), “in whom are deposited all the treasures of wisdom and knowledge” (Col. 2: 3). In order for God's people to affect the transformation of the culture, he must find himself completely submitted to the Word of God as given in Scripture and as enlightened by the Holy Spirit. (Ps. 36: 9; Ps. 119: 105, 130)

EVANGEL CHRISTIAN SCHOOL affirms, therefore, that genuine knowledge of any subject whatsoever begins with reverence and submission to God (Prov. 1: 7), avoiding all adherences to the philosophies of the fallen world or human traditions (Col. 2: 8; 1 Tim. 6: 20). It is a parental duty to train and educate their children, regardless of the subject matter, in the nurture of the Lord and in the light of His natural and divine revelation, Creation and Scripture.

# EVANGEL CHRISTIAN SCHOOL

## HANDBOOK 2019-2020

### ENROLLMENT PROCEDURES

#### February through [August Orientation Meeting](#) (Open Enrollment Period)

- A. Complete and return Enrollment or Re-Enrollment Form, along with Registration Fee
- B. Await email notification of welcome and acceptance into Evangel Christian School, which will provide instructions to complete enrollment finalization process

#### Post [August Orientation Meeting](#) through May (Interview Enrollment Period)

- A. Enrollment by Interview only
- B. [Contact ECS](#) to schedule a time to meet with Registrar

### ANNUAL RECORD-KEEPING & TESTING REQUIREMENTS

- A. Submit the following [forms](#) by September 1 (**Please submit copies and retain originals**)
  - One Per Family
    1. Church Participation / Liability Release
    2. Family Covenant
  - One Per Student
    3. Curriculum Log
    4. Church School Enrollment Form\* (return to ECS Office upon email notification of receipt of Enrollment Form)
      - \**New Families*: You will receive a Church School Enrollment Form via email.
      - \**Re-enrolling Families*: For any children beginning their enrollment with ECS this year, request this form from the ECS Office.
- B. Submit the following [forms](#) twice/year on January 15 and June 15 (**Please submit copies and retain originals**)
  1. Report Card
  2. Attendance Form including number of days attended (at least 175/year)  
Special Note for seniors: Senior students' final Report Card and Attendance Form are due two weeks prior to Graduation Day.
- C. Testing
  - ✎ **SAT10 (w/ OLSAT)** - Designed as a standardized assessment test to aid educators in discovering areas of strength and/or weakness in a given student. The test is also available for students 3<sup>rd</sup> grade and above.
    - **OLSAT** (Otis-Lennon School Ability Test) - Designed as a companion test to the SAT10 so that Achievement/Ability Comparisons can be made. (Administered in concurrence with the SAT10).  
This test is administered on campus in April (exact date, additional registration and cost information to follow)
  - ✎ Required testers may substitute the EXPLORE, PLAN, PSAT, ACT or SAT College Prep Test  
Parents will make those scheduling arrangements themselves. When registering for these tests, be sure to use **ECS' high school code: 010-026**.  
*These tests will be used to track students' progress, and individual scores will not be released to anyone except the parents. Composite group scores will be released to the public consistent with our standards of accountability.*

# EVANGEL CHRISTIAN SCHOOL

## HANDBOOK 2019-2020

### ACADEMIC RECOMMENDATIONS

1. Maintain membership in the [Home School Legal Defense Association](http://www.hslda.org). For membership application, visit [www.hslda.org](http://www.hslda.org). ECS' **HSLDA Group Discount # is 299818**. Our Group Name is *Evangel Christian School*. Membership Form and Payment is made directly to [HSLDA](http://HSLDA).
2. Maintain a portfolio of students work.
3. Utilize overview of material and lesson planning as a means to complete educational goals.

### HIGH SCHOOL GRADUATION REQUIREMENTS

EVANGEL CHRISTIAN SCHOOL OFFERS TWO DIPLOMAS:

1. ACADEMIC HIGH SCHOOL DIPLOMA
2. ADVANCED ACADEMIC HIGH SCHOOL DIPLOMA

<b>DIPLOMA REQUIREMENTS</b>		<b>ACADEMIC DIPLOMA</b>	<b>ADVANCED ACADEMIC DIPLOMA</b>
<i>Discipline</i>	<i>Possible Course Selections</i>	<i>Credits Required</i>	<i>Credits Required</i>
<b>English/Language Arts</b>	World Literature	<b>4</b>	<b>4</b>
	Early American Literature		
	Modern American Literature		
	British Literature		
	(With a combination of literature, grammar, and writing incorporated into each course)		
<b>Mathematics</b>	Algebra 1	<b>3</b>	<b>4</b>
	Geometry		
	Algebra 2/Trigonometry		
	Math Electives including: Advanced Math Calculus Consumer Math		
<b>Science</b>	Physical Science	<b>3</b>	<b>4</b>
	Biology		
	Additional Life and/or Physical Sciences including:		
	<i>Life:</i>		
	✓ Botany		
	✓ Earth/Space Science		
	✓ Environmental Science		
	✓ Genetics		
	✓ Geology		
	✓ Marine Biology		
	✓ Zoology		
	<i>Physical:</i>		
	✓ Anatomy/Physiology		
✓ Chemistry			
✓ Physics			
<b>Social Studies</b>	World History/Geography since 1500	<b>4</b>	<b>4</b>
	U.S. History/Geography (beginnings to 1900)		
	U.S. History/Geography (1900 to present)		
	American Government (one semester)		
	Economics (one semester)		

# EVANGEL CHRISTIAN SCHOOL

## HANDBOOK 2019-2020

<b>DIPLOMA REQUIREMENTS</b>		<b>ACADEMIC DIPLOMA</b>	<b>ADVANCED ACADEMIC DIPLOMA</b>
<i>Discipline</i>	<i>Possible Course Selections</i>	<i>Credits Required</i>	<i>Credits Required</i>
<b>Bible</b>	Survey of Old and New Testament (including scripture memorization, biographical studies)	<b>4</b>	<b>4</b>
	Life of Christ (including study of Beatitudes)		
	Heroes Of The Faith		
	Cult identification		
	Wisdom of Life (Ecclesiastes)		
	Biblical Study Methods		
	Personal Study/Family Devotions/Acts of Service		
	Biblical Ethics		
	Evangelism		
	(A combination of different studies may be used to fulfill required credit hours)		
<b>Physical Education</b>	Organized Sports	<b>1</b>	<b>1</b>
	Concentrated physical activity fulfilling the time requirements for credit hours		
	Health		
<b>Fine Arts</b>	Choir	<b>½</b>	<b>½</b>
	Dance/Ballet		
	Band or concentrated study of musical instrument		
	Music Or Art Appreciation		
	Art		
<b>Computer</b>		<b>½</b>	<b>½</b>
<b>Electives</b>	Drivers Education	<b>5</b>	<b>2</b>
	Auto Mechanics		
	Journalism		
	Photography		
	Work Study		
	Shop		
<b>Foreign Language</b>	(2 years of same language)	<b>0</b>	<b>2</b>
<b>TOTAL</b>		<b>25</b>	<b>26</b>

- ✎ Possible course selections listed are given as a guide and represent requirements from various public and private Alabama schools. This is not an exhaustive list. Please contact administration with questions regarding course selection.
- ✎ A credit is granted for the completion of a year of course work in a given subject. A year of course work is roughly 36 weeks @ 50 minutes per school day, or 150 hours. Half credits are granted for courses that are one semester in duration.
- ✎ A certificate of Completion may be offered to those students who do not meet the academic requirements for the academic or advanced academic diploma. This will be awarded only after consultation between parents and ECS administration.
- ✎ Each college has its' own admission requirements. Contact of any potential college choices to obtain their credit requirements is recommended.

# EVANGEL CHRISTIAN SCHOOL

## HANDBOOK 2019-2020

### TIMETABLE FOR COLLEGE BOUND STUDENTS

#### **9<sup>th</sup> Grade**

- Begin to form a 4-year plan selecting courses with college &/or university preparation in mind.
- Pursue your interests in extra-curricular activities.
- Begin keeping a record of all school activities, awards, and community service.
- Consider summer opportunities that can help broaden your horizons-camps, summer academics, travel, work, and community service.

#### **10<sup>th</sup> Grade**

- Register for and take the Preliminary Scholastic Aptitude Test (PSAT), which is given in October.
- Begin to review financial resources and possible sources for financial aid.
- Consider an ACT or SAT College Board Preparation Workshop.

#### **11<sup>th</sup> Grade**

- Meet with school administrators to review credit hours.
- Study college admission requirements.
- Register for and take PSAT/National Merit Scholarship Qualifying Test (NMSQT), which is given in October (if not taken in 10<sup>th</sup> grade).
- Begin military academy/ROTC applications if applicable.
- Attend local college/university fairs.
- Register for and take the ACT (for in-state college &/or university interest) or SAT College Board (for out-of-state college &/or university and academic scholarship interest).
- Research scholarship opportunities (many colleges and universities use December 1<sup>st</sup> of a student's Senior Year as a deadline for scholarship consideration).
- Write colleges &/or universities requesting application forms, catalogs, and financial information.
- Many schools require letters of recommendation. Notify those people you plan to use as references.

#### **12<sup>th</sup> Grade**

- Re-take, if necessary, entrance tests (ACT, SAT College Board, and Achievement test, if required).
- Apply for need-based state &/or federal financial aid (October).
- All applications and a copy of your High School Transcript should be sent to the colleges &/or universities of your choice by Christmas unless a particular college &/or university states otherwise.
- Pay close attention to deadlines.

# EVANGEL CHRISTIAN SCHOOL

## HANDBOOK 2019-2020

### FAMILY COVENANT

1. We have read, understood, and agreed to all the policies and procedures in the Evangel Christian School Handbook. As daily representatives of the school's high standards, which are founded on The Holy Scriptures, we will endeavor to promote the highest level of excellence in all aspects of our relationships with Evangel Christian School and its agents, our fellow Evangel Christian School families, and our community.
2. In the area of finances, we agree to render payment to Evangel Christian School according to the payment plan selected on our ECS Enrollment or Re-Enrollment Form.  
We further understand that we must pay all outstanding balances in full before any of the following can occur
  - a. Participation in a subsequent ECS sport
  - b. Re-enrollment for a subsequent school year
  - c. Release of student records / transcripts
3. In the area of character, we the parents, agree to bring up our children "in the nurture and admonition of the Lord". We also commit to encourage faith and life in Christ as we lead our family to worship the Lord Jesus Christ through regular church attendance, para-church relationships, service to others, and by our own example. As evidence of this commitment, we agree to maintain high standards of courtesy, morality, and honesty, and to dress appropriately and modestly, not only while attending specific Evangel Christian School functions, but also in all public appearances – realizing that we are daily representatives of the Body of Christ.  
*"Therefore, I urge you, brothers, in view of God's mercy, to offer your bodies as living sacrifices, holy and pleasing to God – this is your spiritual act of worship. Do not conform any longer to the pattern of this world, but be transformed by the renewing of your mind."* Romans 12:1
4. In the area of discipline, we agree to personally follow and submit to the Evangel Christian School Policies on Discipline as described in the Evangel Christian School Handbook, which embraces the Biblical principles for settling conflict or offering correction as described in Matthew 18:15 – 17.  
*"If a fellow believer hurts you, go and tell him – work it out between the two of you. If he listens, you've made a friend. If he won't listen, take one or two others along so that the presence of witnesses will keep things honest, and try again. If he still won't listen, tell the church"* (or, if appropriate, the administrators of Evangel Christian School). - The Message  
For the sake of the purity of the school and church, blatant unrepentance could result in expulsion.
5. We, the parents, agree to provide for our children a Christian home governed by biblical mandates to be love and relationally centered, without strife and condemnation and based on the scriptural model of traditional marriage of one man and one woman.

In signing this covenant with Evangel Christian School, we acknowledge our responsibility before God to be faithful in all of these matters and that the Administrators of Evangel Christian School, its Board, and the Session of Evangel Presbyterian Church also have a responsibility before God to help us and to hold us accountable to our commitment.

This the \_\_\_\_\_ day of \_\_\_\_\_, 20\_\_\_\_\_.

(Parent name printed/signature) \_\_\_\_\_  
(Parent name printed/signature) \_\_\_\_\_

*To be signed by all enrolled Evangel Christian School students, 7<sup>th</sup> grade or above.*

I, the student, agree to abide by the policies and procedures of Evangel Christian School, and to the authority of my parent(s), my instructors(s), coach(es), and the Evangel Christian School administration and staff as they endeavor to guide my character and my education.

This the \_\_\_\_\_ day of \_\_\_\_\_, 20\_\_\_\_\_.

(Student name printed/signature) \_\_\_\_\_  
(Student name printed/signature) \_\_\_\_\_  
(Student name printed/signature) \_\_\_\_\_  
(Student name printed/signature) \_\_\_\_\_